



GOOD MORNING  
Have Good Trading Day

FRIDAY



Price is what you pay.  
Value is what you get.

- Warren Buffet

## MARKET PULSE

### INDIAN INDICES

NAME	CMP	NET CH.	%
SENSEX	25603	-461	-1.77
NIFTY	7847	-132	-1.66

### INDIAN ADR'S

SYMBOL	CLOSE	GAIN/ LOSS %
DRREDDY	46.36	-0.43
HDFCBANK	62.83	-0.65
ICICIBK	7.34	-0.14
INFY	18.89	-0.33
TATAMOTOR	30.71	-0.66
WIPRO	12.16	-0.18

### FII AND MF ACTIVITY

SYMBOL	In Crs.
FIIs Eq (Provisional)	120.63
FIIs Index Future	103.00
FIIs Index Options	-404.72
FIIs Stock Future	-1351.16
FIIs Stock Options	127.50
DIIs Eq (Provisional)	-416.21

### CURRENCY

RBI RATE	28-APR-2016
RUPEE - \$	66.4045
EURO	75.4222
YEN 100	61.3200
GBP	96.8310

## MARKET PULSE

### GLOBAL INDICES

NAME	CMP	NET CH.	%
DOW	17830	-210	-1.17
NASDAQ	4805	-57	-1.19
NIKKEI	16666	Unch	Unch
HANG SENG	21081	-307	-1.44
SGX NIFTY	7882	-27	-0.34

### WORLD COMMODITIES

FUTURE	U\$\$	CHANGES
CRUDE	45.88	-0.15
NATURAL GAS	2.068	-0.010
GOLD	1279.4	+13.0
SILVER	17.830	+0.242
COPPER	2.2515	+0.0200

### WORLD EVENTS

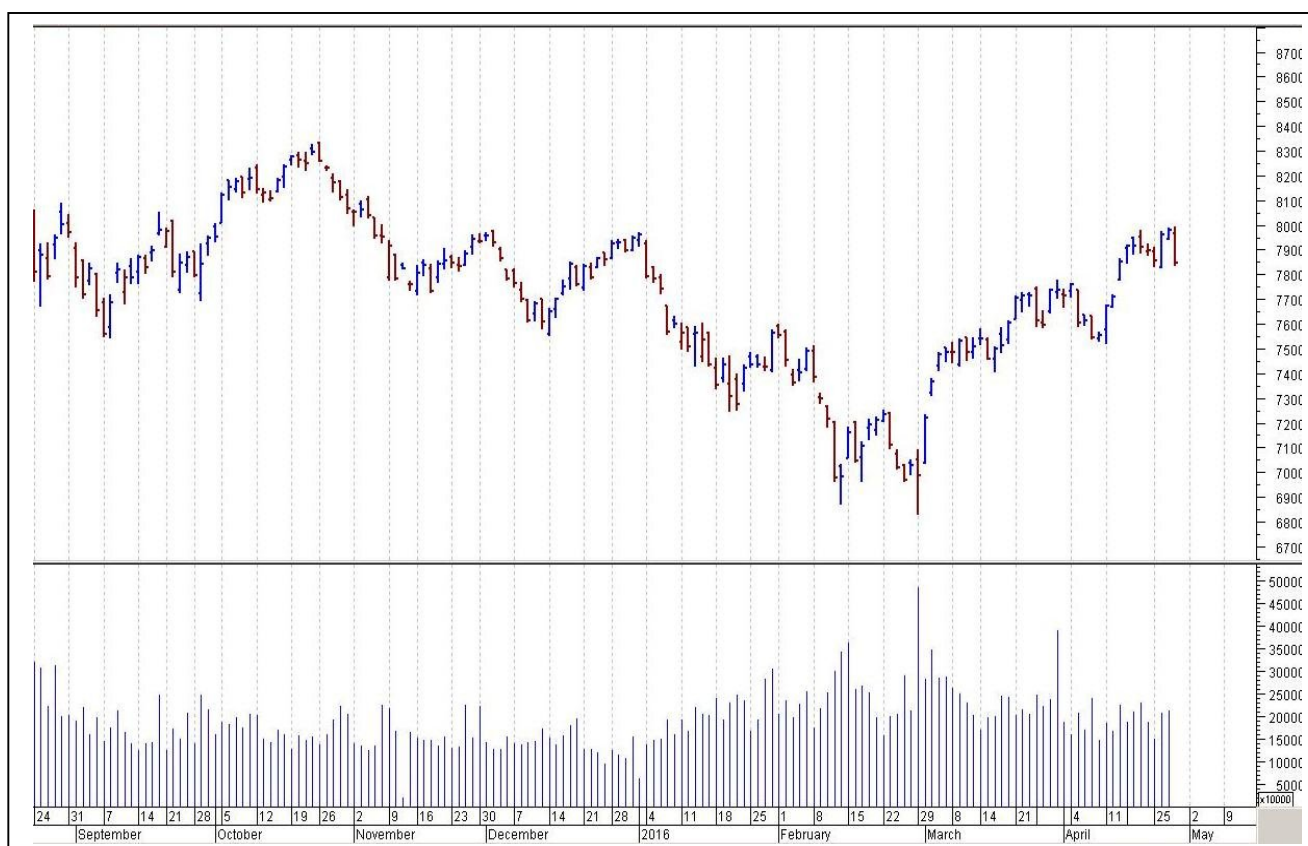
- US:Core PCE Price Index m/m
- Employment Cost Index q/q
- Personal Spending m/m
- UK:Net Lending to Individuals m/m
- MPC Member Cunliffe Speaks

## TOP STORY

- Vedanta Q4 Cons Net Profit At `955.4 Cr Vs `24.3 Cr (QoQ) (Ex-exceptional) Cons Total Income `15,979.3 Cr Vs `14,876.6 Cr (QoQ) Exceptional Loss Of `12,312.3 Cr
- Ambuja Cements Q1 Net Profit Down 4.4% At `303.8 Cr Vs `317.7 Cr (YoY) Total Income Down 0.7% At `2,444.6 Cr Vs `2,463 Cr (YoY)
- Idea Cellular Q4 Net Profit Down 24.7% At `575.6 Cr Vs `764.2 Cr (QoQ) Revenue Up 5.3% At `9,484 Cr Vs `9,009 Cr (QoQ)
- Idea Cellular To Consolidate Tower Infrastructure Services Biz With Unit ICISL
- Dr Reddy's Labs Says Will First Launch Biosimilar Products In India & Then EMs & DMs
- IL&FS Transportation in advanced talks with US-based infra co for sale of minority stake in 2 annuity based projects: Mint
- Govt plans to sell 15% of its stake in NFL and 5% in RCF: FE



## NIFTY CHART



## MARKET COMMENTARY

Thursday's session turned out to be a big disappointment for the Indian equity indices which crumbled like a 'house of cards' and went on to breach various key technical levels in the over one and half percent freefall. Sentiments came under pressure as most Asian markets turned negative despite starting on an optimistic note after the Bank of Japan (BoJ) refrained from adding to its monetary policy stance when most economists were expecting further stimulus. The Bank kept its bond-buying programme at 80 trillion yen (\$733 billion) a year and made no changes to its negative-interest rate or its programme for purchasing exchange-traded funds. On the domestic front, sentiments were undermined by the Fitch ratings' report that indicate the rapid rise in private-sector debt in emerging markets (EMs), particularly in foreign currency, has increased risks to their economies at a time of heightened global uncertainty. For today's trade Nifty likely to trade in the range between 7865 – 7895 in the upper side and 7835 – 7815 in the lower side.

### MARKET LEVELS

	CMP	SUPPORT LEVELS				RESISTANCE LEVELS			
NIFTY	7847	7835	7815	7795	7765	7865	7895	7935	7965
USDINR	66.88	66.8	66.7	66.6	66.5	66.95	67.05	67.15	67.2





#### BULK DEALS (BSE)

SCRIP	CLIENT NAME	BUY/SELL	QUANTITY	PRICE
DIAPOWER	HONGKONG VICTORY INVESTMENT CO LTD	B	330,958	40.98
IVC	UNO METALS LIMITED	S	2,044,000	17.56

#### BULK DEALS (NSE)

SCRIP	CLIENT NAME	BUY/SELL	QUANTITY	PRICE
DIAPOWER	HONGKONG VICTORY INVESTMENT CO LTD	BUY	457990	40.99
IBREALEST	TREE LINE ASIA MASTER FDSINGPTE L	BUY	6400000	63.38
IBREALEST	UBS A/C SWISS FINANCE CORPORATION (MAURITIUS) LIMITED	BUY	5000000	62.32
JUBLFOOD	CREDIT SUISSE (SINGAPORE) LIMITED A/C CREDIT SUISSE (SINGAP	BUY	2285596	1279.06
JUBLFOOD	JUBILANT CONSUMER PRIVATE LIMITED	SELL	2370170	1279.37

#### SCRIP'S IN F&O BAN

(To resume for normal trading below 80% of market wide limit required)

NIL

#### Initial Public Offering (IPO)

Company Name	Security type	Issue Start Date	Issue End Date	Status
Ujjivan Financial Services	Equity	Apr 28, 2016	May 02, 2016	OPEN
Thyrocare technologies	Equity	Apr 27, 2016	Apr 29, 2016	OPEN



NIFTY 50 STOCKS: SUPPORT & RESISTANCE						
Symbol	Close	Support 1	Support 2	Pivot Point	Resistance1	Resistance2
ACC	1438	1414	1389	1432	1457	1475
ADANI PORTS	235	233	230	237	240	245
AMBUJACEM	220	216	213	223	226	232
ASIANPAINT	873	864	855	879	888	904
AXISBANK	468	462	457	467	473	477
BAJAJ-AUTO	2488	2456	2425	2512	2544	2600
BANKBARODA	161	159	157	161	163	165
BHARTIARTL	373	367	362	376	382	391
BHEL	125	123	121	126	128	131
BOSCHLTD	19949	19754	19559	20042	20237	20525
BPCL	963	951	939	970	982	1001
CAIRN	143	141	138	144	146	150
CIPLA	528	521	514	532	540	551
COALINDIA	285	281	277	287	291	297
DRREDDY	3083	3055	3027	3100	3128	3172
GAIL	363	358	352	367	373	382
GRASIM	4118	4090	4063	4113	4140	4163
HCLTECH	800	790	780	807	816	833
HDFC	1086	1070	1054	1098	1114	1142
HDFCBANK	1114	1104	1094	1120	1130	1147
HEROMOTOCO	2900	2874	2848	2913	2939	2979
HINDALCO	97	95	93	99	101	105
HINDUNILVR	876	866	856	881	892	907
ICICIBANK	240	237	233	242	246	251
IDEA	127	125	123	127	128	130
INDUSINDBK	1035	1026	1018	1038	1046	1057
INFY	1209	1198	1186	1219	1230	1251
ITC	323	319	315	325	329	336
KOTAKBANK	701	694	686	706	714	726
LT	1260	1248	1236	1265	1277	1295
LUPIN	1576	1563	1549	1574	1587	1599
M&M	1345	1325	1305	1361	1381	1417
MARUTI	3748	3704	3660	3779	3823	3898
NTPC	137	135	134	138	140	143
ONGC	217	213	209	219	223	229
PNB	88	87	86	89	90	92
POWERGRID	142	140	139	143	144	147
RELIANCE	997	985	974	1002	1014	1031
SBIN	192	189	187	194	196	201
SUNPHARMA	802	795	788	807	814	826
TATAMOTORS	411	407	403	414	418	425
TATAPOWER	69	68	68	70	71	72
TATASTEEL	348	342	336	352	358	368
TCS	2528	2504	2480	2522	2546	2564
TECHM	480	471	462	477	487	493
ULTRACEMCO	3169	3138	3108	3183	3214	3259
VEDL	100	98	95	101	104	108
WIPRO	553	548	543	556	561	569
YESBANK	946	924	902	938	960	973
ZEEL	405	401	397	406	410	414



## CORPORATE ACTION / BOARD MEETINGS

NSE Download Ref No:NSE/FAOP/32249:- Exclusion of Futures and Options contracts on IOB and UCOBANK w.e.f. July 01, 2016

### BOARD MEETINGS

COMPANY NAME	DATE	PURPOSE	RS. PER SH.
DISHMAN	2-May-16	Bonus 1:1	
GDL	4-May-16	Dividend	
ITDCM	4-May-16	Annual General Meeting	
WIPRO	5-May-16	Buyback Of Shares	
SBT	5-May-16	Annual General Meeting/ Dividend	5
SBBJ	5-May-16	Dividend	
HCLTECH	5-May-16	Dividend	
LINDEINDIA	6-May-16	Annual General Meeting/ Dividend	0.75
MAHINDCIE	9-May-16	Annual General Meeting	
GODREJCP	10-May-16	Dividend	
GMBREW	10-May-16	Annual General Meeting/ Dividend	2.5
NESTLEIND	16-May-16	Dividend	18.5
RIIL	20-May-16	Dividend	3.5

## NEWS & RUMOURS:

- Gold (Spot Dollar) major support = \$1231/\$1197 & Resistance = \$1296/\$1330.
- Crude oil range->\$39 to \$49.
- U.S. Stocks Fluctuate on Earnings as Yen Surges with Gold on BOJ: - U.S. stocks fluctuated, paring declines amid strong results from Facebook Inc. and corporate deals, while the yen rallied on disappointment that the Bank of Japan refrained from adding to stimulus.
- China commodities cool as exchange boosts anti-speculation moves: - Steel and iron ore futures in China steadied on Thursday, while other commodities fell as a key Chinese exchange stepped up measures to combat speculative froth behind a recent market surge. Financial investors have charged into Chinese commodities futures this year, driving up contracts including iron ore, rebar, cotton and even eggs, leading many to warn of similarities with a boom in the country's stock markets, which reversed into a sharp crash last summer.
- Crude oil prices ease after hitting 2016 highs: - Oil futures slid after setting a 2016 high on Thursday as traders locked in profits, though analysts said supply disruptions, strong investor appetite and a weakening dollar could push prices higher soon.
- Gold jumps to 1-week high as dollar drops after BoJ decision: - Gold futures climbed to a one-week high in European trade on Thursday, as the [U.S. dollar tumbled against the yen](#) after the Bank of Japan surprised markets by keeping monetary policy steady. The greenback was already on the defensive after the [Federal Reserve left interest rates unchanged](#) following its two-day meeting on Wednesday and issued a statement implying it was in no hurry to raise rates. Offering little hope of a move in June, the Fed said U.S. "economic conditions will evolve in a manner that will warrant only gradual increases in the federal funds rate."

## TRENDS & OUTLOOK – DATE: 29- Apr- 2016

### PRECIOUS METALS:

COMMDITY (MCX)	S2	S1	PIVOT POINT	R1	R2
GOLD (June)	28890	29190	29550	29860	30130
SILVER (May)	38400	39600	40710	41999	43000

### BASE METALS

COMMDITY (MCX)	S2	S1	PIVOT POINT	R1	R2
COPPER (Apr)	317	321	326	333	337
ZINC (May)	121.30	124.20	126.50	129.40	132.55
LEAD (May)	110.70	113.40	116.50	119.50	122.20
NICKEL (May)	577	596	614	539	555

### ENERGY

COMMDITY (MCX)	S2	S1	PIVOT POINT	R1	R2
CRUDE OIL (May)	2820	2929	3025	3135	3270
NATURAL GAS (May)	129	134	140	146	151

### DATE TALKS : TODAY'S ECONOMIC DATA :

SNB Chairman Jordan Speaks, Core PCE Price Index, Employment Cost Index, Personal Spending, Personal Income, Chicago PMI, Revised UoM Consumer Sentiment, Revised UoM Inflation Expectations.





Registered Office

Indira House, 3rd Floor, 5 Topiwala Lane,  
Opp. Lemington Road Police Station, Grant Road (East), Mumbai - 400007.

Corporate Office

'Ramavat House' E-15, Saket Nagar, Indore - 452018 (M.P.)

Customer Care

Tel: +91-731-4097170/ 71/ 72/ 73/ 74 M. +91 93031 72345

Email: [customercare@indiratrade.com](mailto:customercare@indiratrade.com) [www.indiratrade.com](http://www.indiratrade.com)



INSTITUTIONAL DEALING UNIT

Africa House, 5, Topiwalla Lane, Lamington Road, Mumbai, 400007

Tel: +91 22 30080678 Fax : +91 22 23870767 Email : [ie@indiratrade.com](mailto:ie@indiratrade.com)

**Disclaimer**

This report is for private circulation within the Indira Group. This report is strictly confidential and for information of the selected recipient only and may not be altered in any way, transmitted to, copied or distributed, in part or in whole, to any other person or to the media or reproduced in any form. This report should not be construed as an offer or solicitation to buy or sell any securities or any interest in securities. It does not constitute a personal recommendation or take into account the particular investment objectives, financial situations, or any such factor. The information, opinions estimates and forecasts contained here have been obtained from, or are based upon, sources we believe to be reliable, but no representation of warranty, express or implied, is made by us to their accuracy or completeness. Opinions expressed are our current opinions as of the date appearing on this material only and are subject to change without notice.